

Georgia Society of Ophthalmology  
Emory University Eye Center  
MCG Department of Ophthalmology

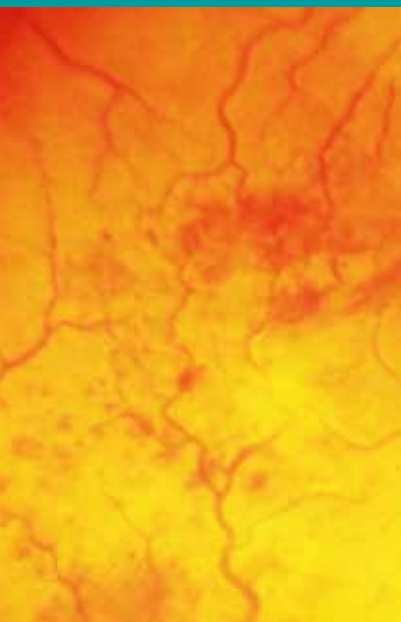
present



an educational program for

# Ophthalmic Medical Personnel

Saturday, February 20, 2010  
St. Regis Hotel :: Atlanta, Georgia



# Educational Program



## Pediatric Ocular Trauma

Julian Nussbaum, MD

*Professor and Chairman, Department of Ophthalmology  
Medical College of Georgia - Augusta, Georgia*

This course will include a review of the most common causes of pediatric ocular trauma. Participants will understand the scope of the problem, how the diagnoses are made, and the current medical and surgical treatment modalities.



## Optics & Refraction for Ophthalmic Medical Personnel

David Bogorad, MD, FACS

*Professor and Vice Chairman, Department of Ophthalmology  
Medical College of Georgia - Augusta, Georgia*

This course will include basic physiological optics and refractive error. Participants will gain understanding of the fundamentals of refraction and use of examining equipment to evaluate a patient's refractive state.



## Non-Accidental Ophthalmic Injuries in Children

Stephanie Goei, MD

*Associate Professor, Department of Ophthalmology  
Medical College of Georgia - Augusta, Georgia*

This course will include a review of the most common forms of non-accidental pediatric ocular trauma. Participants will understand the scope of the problem, how the diagnoses are made, and the current medical and surgical treatment modalities.



## Current Concepts in Medical & Surgical Management of Glaucoma

Kathryn Bollinger, MD, PhD

*Associate Professor, Department of Ophthalmology  
Medical College of Georgia - Augusta, Georgia*

This course will include a review of the differences between open and closed angle glaucoma with respect to patho-physiology and disease management. Participants will understand how both of these diagnoses are made and discuss current medical, laser, and surgical treatment modalities.



## Intraocular Lens (IOL) Selection

Maria Woodward, MD

*Assistant Professor, Department of Ophthalmology  
Section of Cornea & External Diseases  
Emory University School of Medicine - Atlanta, Georgia*

In this course, indications for intraocular lens implantation will be discussed. Participants will learn about the variety of lenses available to the patient, how lens selection is made, the limitations of each lens, and how to match lens selection to the patient's needs.



## Treatment Options for Macular Edema

Blaine Cribbs, MD

*Assistant Professor, Department of Ophthalmology  
Section of Vitreoretinal Surgery & Disease  
Emory University School of Medicine - Atlanta, Georgia*

This course will include a review of the most common causes of macular edema. Participants will understand the scope of the problem, how the diagnoses are made, and the current medical and surgical treatment modalities.

# Program Details

## Course Schedule

8:00 AM - 9:00 AM	Continental Breakfast
9:00 AM - 11:00 AM	Educational Program
11:00 AM - 11:30 AM	Break & Exhibit Visitation
11:30 AM - 1:30 PM	Educational Program
1:30 PM - 2:30 PM	Lunch
2:30 PM - 4:30 PM	Educational Program
4:30 PM	Adjourn

## About This Program

This educational program for ophthalmic medical personnel is being presented in conjunction with the "GEM Eye Meeting" educational program for ophthalmologists. Registered attendees for both meetings will share breakfast, breaks, and the exhibit hall.

## Educational Objectives

Upon completion of this educational activity, participants will be able to

- List the basic categories of pediatric ocular trauma and their management.
- Describe the basics of the eye's optical system, the instruments used for measurement, and the basic techniques of subjective refraction.
- List the basic categories of non-accidental pediatric ocular trauma and their management.
- List the basic differences and similarities that exist with respect to diagnosis and management of open and closed angle glaucoma.
- Discuss the variety of intraocular lens (IOL) options with a patient.
- List the basic categories of macular edema and their management.

## Target Audience

The target audience for this educational activity are Certified Ophthalmic Assistants, Certified Ophthalmic Technicians, and Certified Ophthalmic Medical Technologists.

## JCAHPO Credit Hours

This course has been awarded six (6) JCAHPO credit hours.

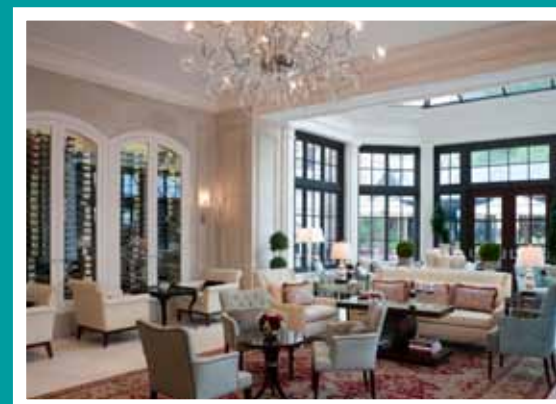
## Location & Hotel Accommodations

### St. Regis Hotel

88 West Paces Ferry Road | Atlanta, GA 30305  
Ph: (404) 563-7900

Hotel accommodations are available at a group rate of \$205 per night. To book a room, please call (888) 627-7231 and mention the Georgia Society of Ophthalmology. To get this rate, rooms must be booked by January 20, 2010 at 5:00 pm.

The meeting will take place in the **Astor Ballroom**. Registration and check-in will be located in the **Astor Ballroom Foyer**.



# Course Registration

Registration Type	By Jan. 20	After Jan. 20
Ophthalmic Medical Personnel	\$125	\$150

**\*\* REGISTER ONLINE at [WWW.GA-EYEMDS.ORG](http://WWW.GA-EYEMDS.ORG) \*\***

## Program Planning

This educational activity was founded and planned by the Medical College of Georgia Department of Ophthalmology and is presented this year in conjunction with the GEM Eye Meeting.

## Parking

Valet parking is available at the discounted group rate of \$15. Attendees must mention the Georgia Society of Ophthalmology to get this rate.

## Questions?

Please direct questions to Laura Faye, Director of Education at the Georgia Society of Ophthalmology at (404) 299-6588 or [laura@ga-eyemds.org](mailto:laura@ga-eyemds.org).

## Who Can Register

Certified and non-certified ophthalmic medical personnel are invited to register for this course.

## How to Register

Participants may register online, by mail, or by fax. To register online, please visit [www.ga-eyemds.org](http://www.ga-eyemds.org).

To register by mail or fax, please submit the enclosed registration form with payment to the Georgia Society of Ophthalmology by FAX to (404) 299-7029 or MAIL to 2711 Irvin Way, Suite 111, Decatur, GA 30030.

EDUCATIONAL PROGRAM FOR OPHTHALMIC MEDICAL PERSONNEL :: SATURDAY, FEBRUARY 20, 2010 :: ATLANTA, GEORGIA

**Georgia Society of Ophthalmology**  
**Executive Office**  
2711 Irvin Way, Suite 111  
Decatur, GA 30030  
Ph: (404) 299-6588  
[www.ga-eyemds.org](http://www.ga-eyemds.org)

