

GEOORGIA SOCIETY OF OPHTHALMOLOGY

EMORY EYE CENTER & EMORY UNIVERSITY SCHOOL OF MEDICINE

MCG DEPARTMENT OF OPHTHALMOLOGY

present the first annual



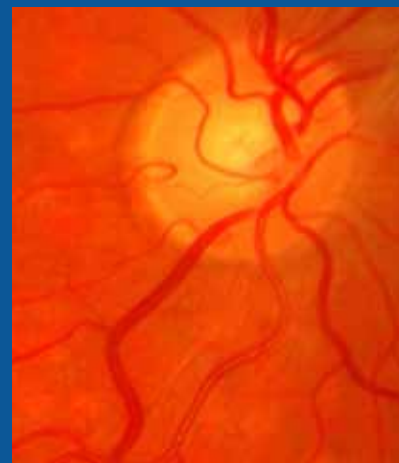
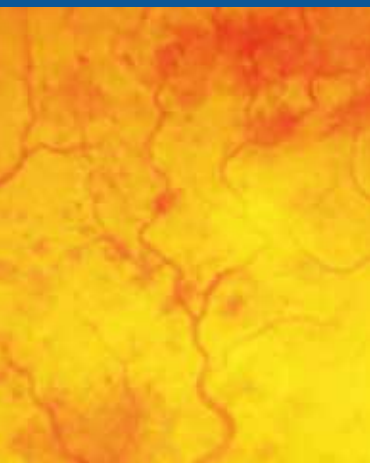
GEM

Eye Meeting

continuing medical education for ophthalmologists

SATURDAY, FEBRUARY 20, 2010

ST. REGIS HOTEL | ATLANTA, GEORGIA



Educational Program



Stephen S. Lane, MD

*Clinical Professor of Ophthalmology, University of Minnesota
Secretary for Online Education / E-Learning
American Academy of Ophthalmology
Minneapolis, Minnesota*



Douglas A. Jabs, MD, MBA

*Professor and Chairman, Department of Ophthalmology
Mount Sinai School of Medicine
New York, New York*



Andrew G. Lee, MD

*Chairman, Methodist Eye Associates at Methodist Hospital
Professor of Ophthalmology, Weill Cornell Medical College
Houston, Texas*



David C. Leach, MD

*Retired CEO
Accreditation Council for Graduate Medical Education
Asheville, North Carolina*

1 hour of ethics
CME toward
recertification!

**“Management of Astigmatism in Cataract Surgery”
“What’s New in Intraocular Lenses (IOLs)”**

**“Management of Posterior Uveitis”
“Scleritis”**

**“Five Medicines That Could Blind Your Next Patient”
“Five Diagnoses That You Cannot Afford to Miss”
“Five Wicked Good Neuro-Ophthalmic Pearls”**

**“Medical Ethics: From Rhetoric to Poetry”
2010 Malcolm Luxenburg Ethics Lecture**

Program Details

Meeting Agenda

7:30 AM - 8:30 AM	Registration & Check-In / Continental Breakfast
8:35 AM - 10:35 AM	Educational Program
10:35 AM - 11:05 AM	Break & Exhibit Visitation
11:05 AM -12:20 PM	Educational Program, cont.
12:20 PM - 1:20 PM	Lunch & Exhibit Visitation
1:25 PM - 2:55 PM	Educational Program, cont.
2:55 PM - 3:25 PM	Break & Exhibit Visitation
3:35 PM - 4:40 PM	Educational Program

Educational Objectives

Upon completion of this educational activity, participants will be able to:

- Identify risk factors and ocular conditions that may have systemic implications.
- List five potentially life-threatening neuro-ophthalmic diagnoses.
- List five medicines that can produce visual toxicity and their risk factors.
- Describe surgical techniques and new technology that may be used to manage astigmatism in cataract surgery.
- Explain the advantages and disadvantages of multifocal and accommodating IOLs.
- Describe the latest generation of phakic IOLs and their place in the ophthalmologist’s armamentarium of refractive procedures.
- Explain differential diagnosis of posterior uveitis and nosology scleritis.
- Apply treatment techniques and methodologies to patients with uveitis and scleritis.
- Improve performance utilizing a simple, practical framework to guide ethical behavior.
- Align performance in practice with established norms in medical ethics.
- Apply treatment strategies and lessons learned through actual patient case presentations to similar situations encountered in practice.

Target Audience

The target audience for this educational activity is ophthalmologists throughout Georgia and the southeast.

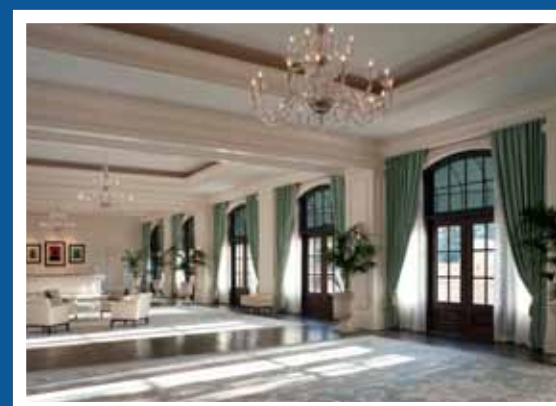
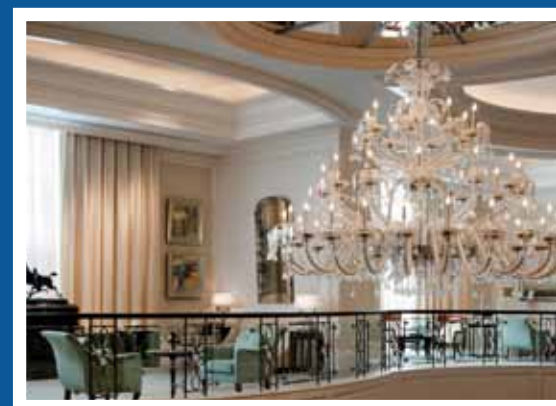
CME Planning Committee

Anastasios P. Costarides, MD, PhD (Chair)	Wallace McLeod, Jr., MD
Timothy W. Olsen, MD	Malcolm S. Moore, Jr., MD
Julian Nussbaum, MD	John E. Godard, MD

The Emory University School of Medicine designates this educational activity for a maximum of 6.5 American Medical Association Physician’s Recognition Award Category 1 Credits[®]. Each physician should only claim credit commensurate with the extent of his/her participation in the activity.

The Emory University School of Medicine is accredited by the Accreditation Council for Continuing Medical Education to provide medical education for physicians.

It is the intent of Emory University School of Medicine to assure that its educational mission, and Continuing Medical Education activities in particular, should not be influenced by the special interests of individuals associated with its programs. Having an interest in or an affiliation with any corporate organization does not necessarily influence a speaker’s presentation, but the relationship must be made known in advance to the audience in accordance with the Standards of the Accreditation Council for Continuing Medical Education. Any conflicts will be disclosed prior to the beginning of the program.



Parallel Educational Program for Ophthalmic Medical Personnel

**** For further details and to register, please visit www.ga-eyemds.org ****

Pediatric Ocular Trauma

Julian Nussbaum, MD
*Professor and Chair, Department of Ophthalmology
Medical College of Georgia*

Optics & Refraction for Ophthalmic Medical Personnel

David Bogorad, MD, FACS
*Professor and Vice Chairman, Department of Ophthalmology
Medical College of Georgia*

Non-Accidental Ophthalmic Injuries in Children

Stephanie Goei, MD
*Associate Professor, Department of Ophthalmology
Medical College of Georgia*

Current Concepts in Medical and Surgical Management of Glaucoma

Kathryn Bollinger, MD, PhD
*Associate Professor, Department of Ophthalmology
Medical College of Georgia*

Intraocular Lens (IOL) Selection

Maria Woodward, MD
*Assistant Professor of Ophthalmology
Section of Cornea and External Disease
Emory University School of Medicine*

Treatment Options for Macular Edema

Blaine Cribbs, MD
*Assistant Professor of Ophthalmology
Section of Vitreoretinal Surgery and Disease
Emory University School of Medicine*

This course has been awarded six (6) JCAHPO credit hours.

Course Registration

Registration Type	By Jan. 20	After Jan. 20
GSO Member	\$235	\$275
Non-Member	\$435	\$475
Resident/Fellow <small>* Deposit will be refunded when meeting attendance is verified.</small>	\$25 deposit*	\$25 deposit*

**** REGISTER ONLINE at WWW.GA-EYEMDS.ORG ****

Location & Accommodations

St. Regis Hotel

88 West Paces Ferry Road | Atlanta, GA 30305
Ph: (404) 563-7900

Hotel accommodations are available at a group rate of \$205 per night. To book a room, please call (888) 627-7231 and mention the Georgia Society of Ophthalmology. To get this rate, rooms must be booked by 5:00 p.m. on January 20, 2010.

How to Register

Participants may register online, by mail, or by fax. To register online, please visit www.ga-eyemds.org.

To register by mail or fax, please submit the enclosed registration form with payment to the Georgia Society of Ophthalmology by FAX to (404) 299-7029 or MAIL to 2711 Irvin Way, Suite 111, Decatur, GA 30030.

Questions?

Please direct questions to Laura Faye, Director of Education at the Georgia Society of Ophthalmology at (404) 299-6588 or laura@ga-eyemds.org.

Parking

Valet parking is available at the discounted group rate of \$15. Attendees must mention the Georgia Society of Ophthalmology to get this rate.

GEM EYE MEETING :: SATURDAY, FEBRUARY 20, 2010 :: ST. REGIS HOTEL :: ATLANTA, GEORGIA

Georgia Society of Ophthalmology
Executive Office

2711 Irvin Way, Suite 111
Decatur, GA 30030
Ph: (404) 299-6588
www.ga-eyemds.org

